

Perforations
110 - 120 Holes

Font Height 15mm

VAT FREE

TRIANGLE
BLUE
Cement
NOT FOR RE-SALE
ISO 9001:2008 CERTIFIED

A Product of
East African Portland Cement Co. Ltd.
Contact: Tel:254-045-22777. Email:info@eapcc.co.ke
P. O. BOX 20. 00204 ATHIRIVER



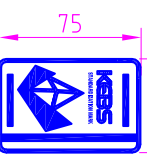
POZZOLANIC CEMENT CEM IV/A 32.5 N

VAT FREE

APPLICATIONS	Suppliers	1	2	3	4	5	6
High strength concrete bases of equipment, columns, chimneys and carports.	1	1	2	2	2	2	2
High strength and wearable concrete, slabs, steps, footings, etc.	1	2	4	4	6	6	6
Medium strength concrete floors, beams, columns, chimneys and carports.	1	3	6	6	6	6	6
Low strength concrete foundations and walls.	1	4	-	-	-	-	-
General purpose mortar and plaster exposed to dampness (external).	1	5	-	-	-	-	-
General purpose mortar and plaster not exposed to dampness (internal).	1	5	-	-	-	-	-
General purpose mortar and plaster for ceiling.	1	3	-	-	-	-	-

NOT FOR RE-SALE

POZZOLANIC CEMENT CEM IV/A 32.5 N



APPLICATIONS	Suppliers	1	2	3	4	5	6
High strength concrete bases of equipment, columns, chimneys and carports.	1	1	2	2	2	2	2
High strength and wearable concrete, slabs, steps, footings, etc.	1	2	4	4	6	6	6
Medium strength concrete floors, beams, columns, chimneys and carports.	1	3	6	6	6	6	6
Low strength concrete foundations and walls.	1	4	-	-	-	-	-
General purpose mortar and plaster exposed to dampness (external).	1	5	-	-	-	-	-
General purpose mortar and plaster not exposed to dampness (internal).	1	5	-	-	-	-	-
General purpose mortar and plaster for ceiling.	1	3	-	-	-	-	-

VAT FREE

APPLICATIONS	Suppliers	1	2	3	4	5	6
High strength concrete bases of equipment, columns, chimneys and carports.	1	1	2	2	2	2	2
High strength and wearable concrete, slabs, steps, footings, etc.	1	2	4	4	6	6	6
Medium strength concrete floors, beams, columns, chimneys and carports.	1	3	6	6	6	6	6
Low strength concrete foundations and walls.	1	4	-	-	-	-	-
General purpose mortar and plaster exposed to dampness (external).	1	5	-	-	-	-	-
General purpose mortar and plaster not exposed to dampness (internal).	1	5	-	-	-	-	-
General purpose mortar and plaster for ceiling.	1	3	-	-	-	-	-

NOT FOR RE-SALE

Font height 4 mm

BLUE TRIANGLE Cement

INFORMATION AND MIXING RATIOS (With a Logo on top)
Scale 1:2

1:4

INK PROPERTIES

- SHOULD BE RUBBING RESISTANT
- SHOULD BE BLEED RESISTANT
- SHOULD BE LIGHT FAST
- SHOULD BE FULLY PIGMENTED
- THE BAG SHOULD BE A MULTIL WALL KRAFT PAPER BAG
- ALL SMALL TRIANGLES OF THE LOGO TO BE 55mm HIGH AS SHOWN

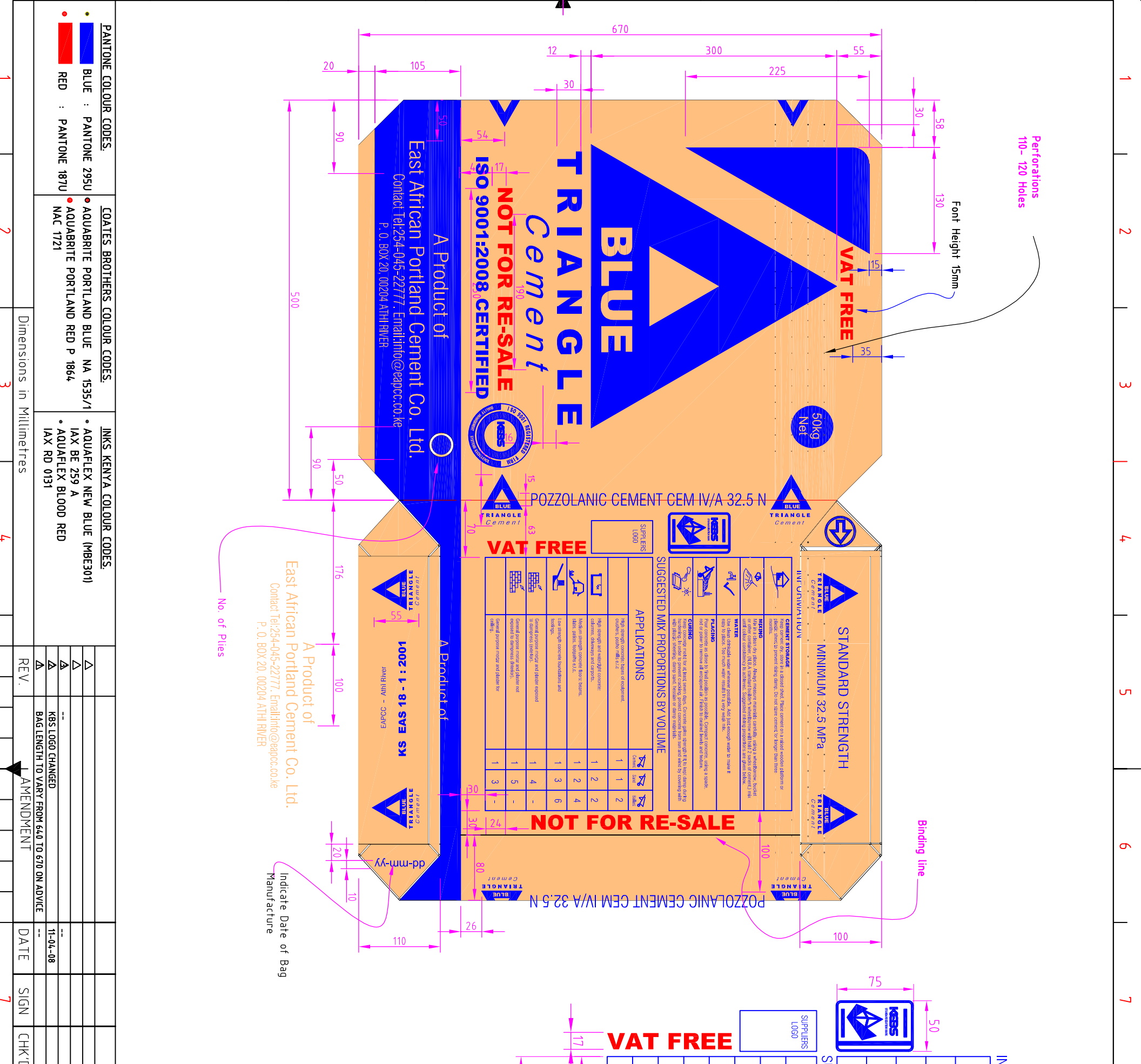
GENERAL NOTES

The information transmitted by this document is the proprietary and confidential property of EAPCC, and may not be duplicated, disclosed, or utilized without written consent from EAPCC.

East African Portland Cement Co. Ltd.
Holding It Together

P.O.Box 20, 00204, ATHIRIVER, KENYA | Tel: +254 045 20627 | Fax 045 20406
Email: info@eapcc.co.ke | Web site: www.eastafrikanportland.com

TITLE	LOCAL CEMENT BAG (PPC) VAT FREE	DRAWN	Luhl L.	DATE	29 Jun 2009
SCALE	1:5	CHECKED		APPROVED	
PRODUCT CODE	07PK01	THIRD ANGLE		DRG No	
Material Spec	WPP	WEIGHT	92 GSM	EAPC/ATR/07PK01/019	



PANTONE COLOUR CODES:	COATES BROTHERS COLOUR CODES:	INKS KENYA COLOUR CODES:
• BLUE : PANTONE 295U	• AQUABRITE PORTLAND BLUE NA 1535/1	• AQUAFLEX NEW BLUE (MBE301)
• RED : PANTONE 187U	• AQUABRITE PORTLAND RED P 1864	• AQUAFLEX BLOOD RED
	• AQUABRITE PORTLAND RED P 1864	• AQUAFLEX BLOOD RED
	• AQUABRITE PORTLAND RED P 1864	• AQUAFLEX BLOOD RED
	• AQUABRITE PORTLAND RED P 1864	• AQUAFLEX BLOOD RED

Dimensions in Millimetres